

Service Manual

VISTA

An Excellent X-ray film illuminator

By LCD TV Technology

VISTA series

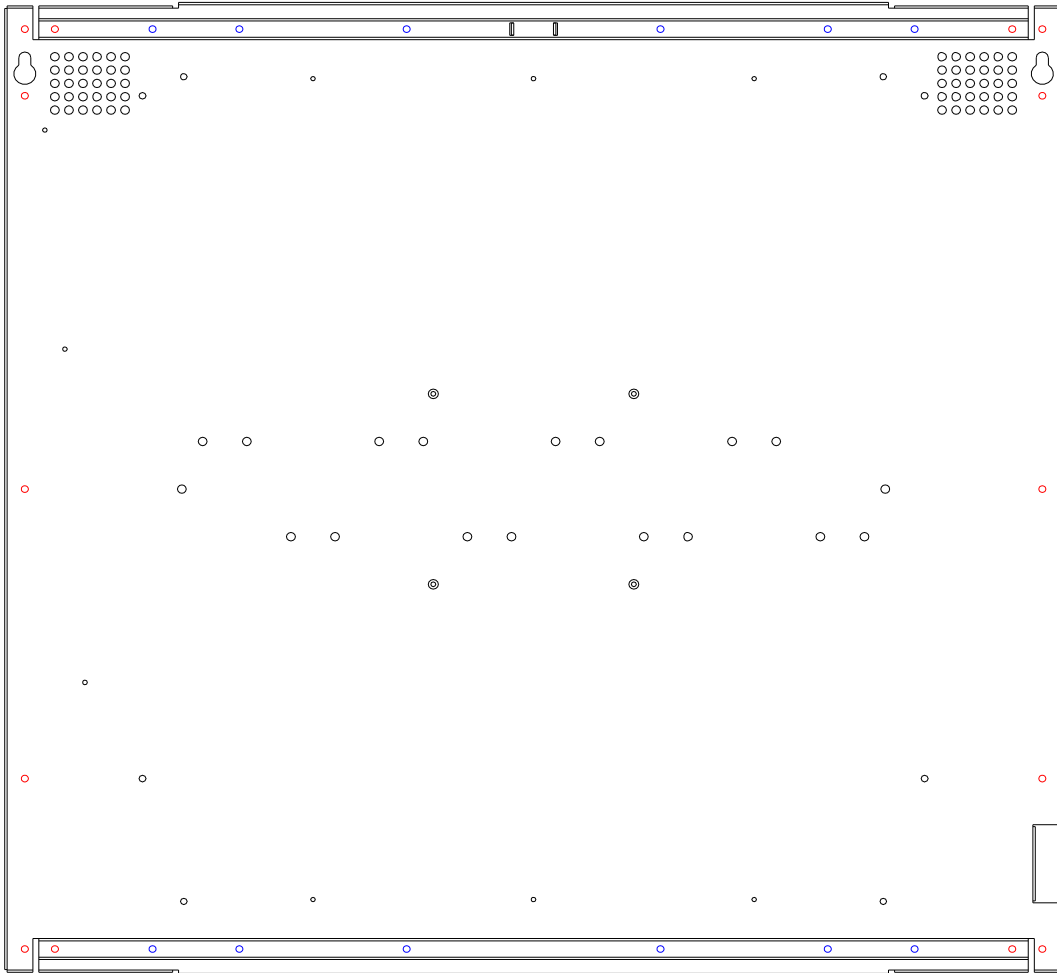


Point A

Technologies, Inc.

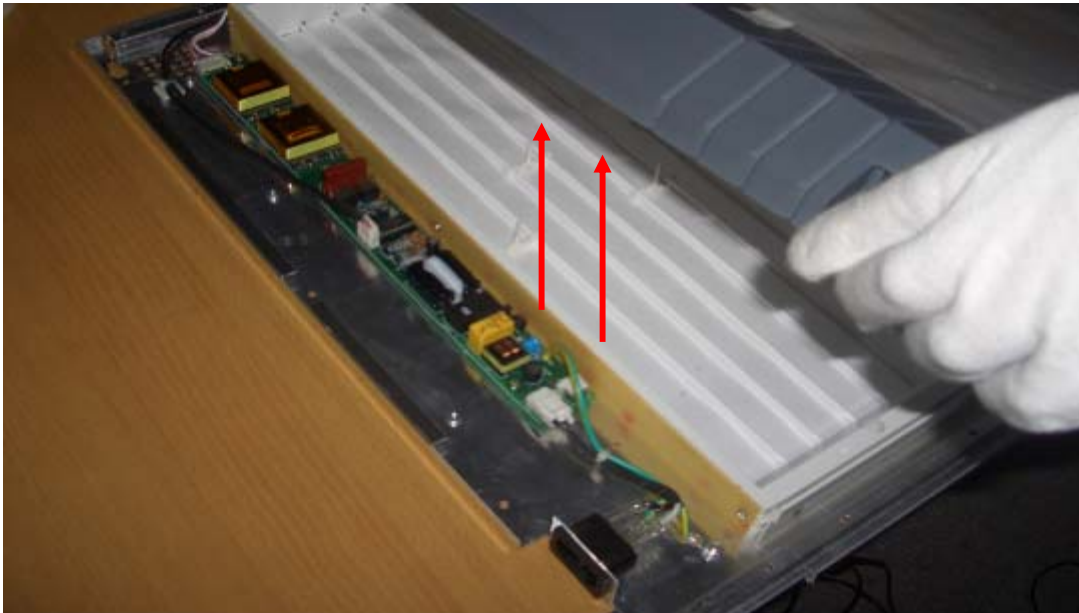
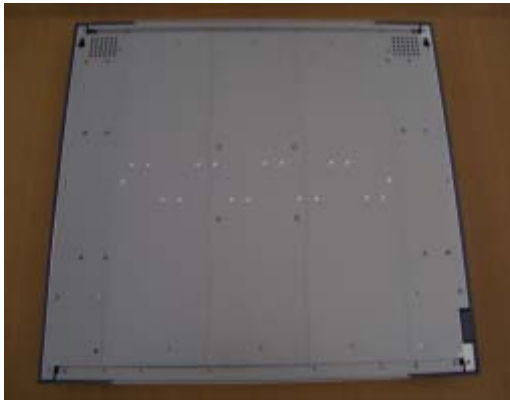
1. REMOVE THE FRONT PANEL

- Dismantle the power code if it is plug in.
- Overturn the set and unscrew below marked red and blue



Mark	Standard	Qty
Red	$\Phi 2.9 \times 10$	14
Blue	$\Phi 2.6 \times 6$	12

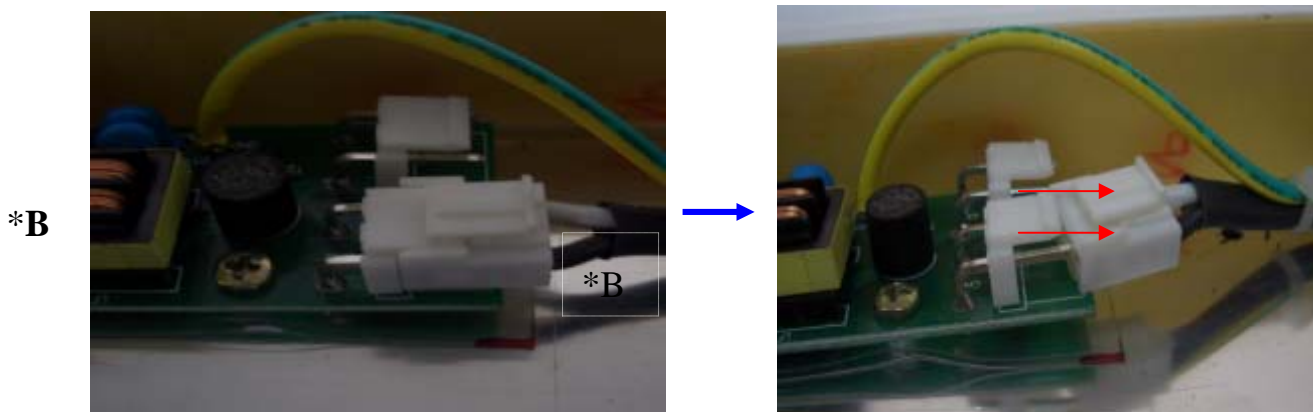
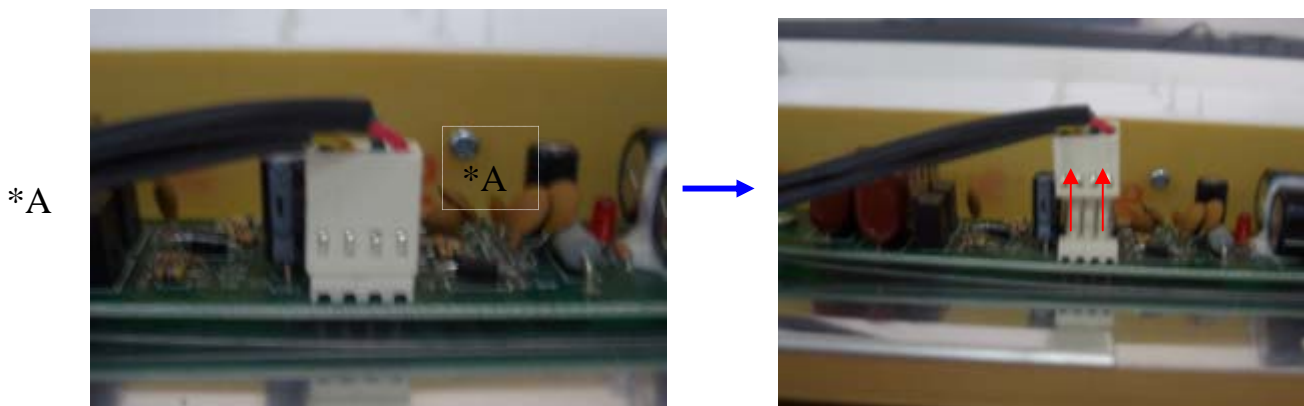
— After unscrew, re-overture the set and dismantle the front panel as picture



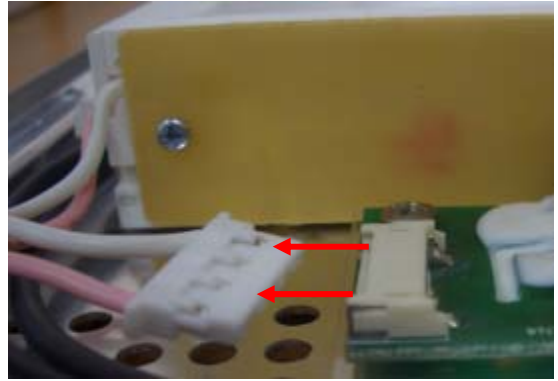
1-1. Inverter replacement



1-1-1. Push and dismantle the connectors above marked *A, *B, *C.



*C



1-1-2. Unscrew marked in red-circle to replace with the new inverter.



1-1-3. After replacing the inverter, assemble in reverse order.

1-2. Lamps replacement

1-2-1. Removing the front panel and dismantle the connectors as 1-1-1.

1-2-2. Unscrew from the 6 of below marked position.(M3*12)

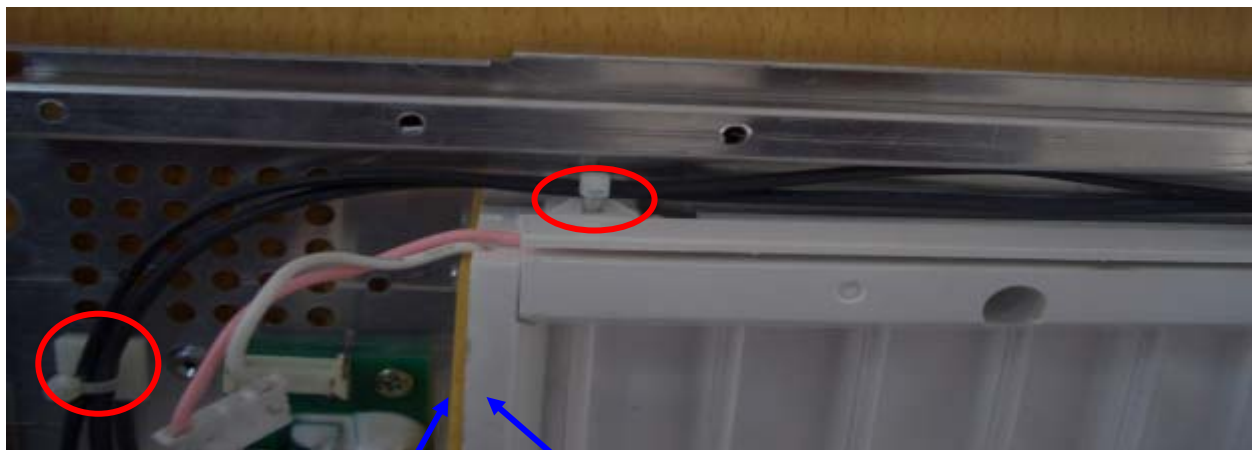


1-2-3. Draw out the lamps from the lamp support as below pictures.

(Be careful when pull out the lamps as it is fragile.)



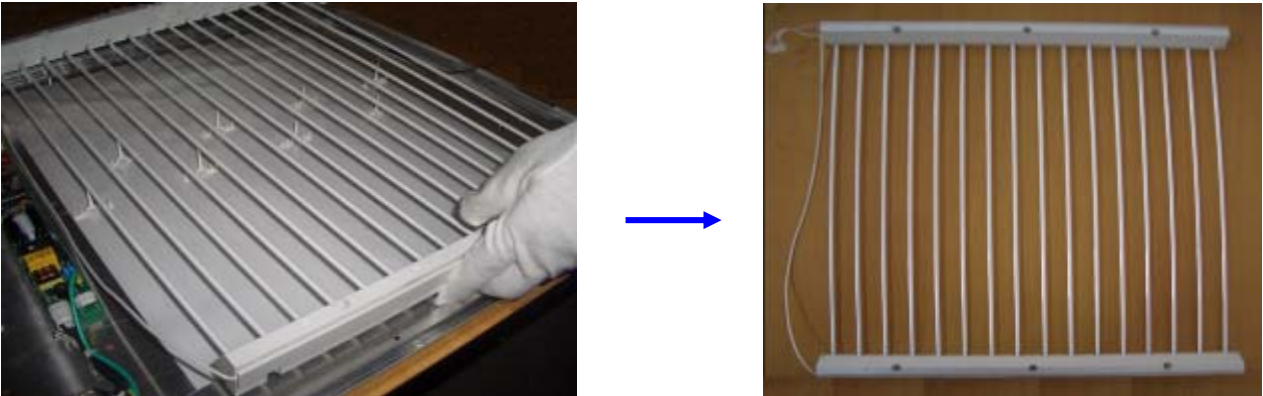
1-2-4. Removing Side wall cover ,Side wall and the tie holders.



Side wall cover

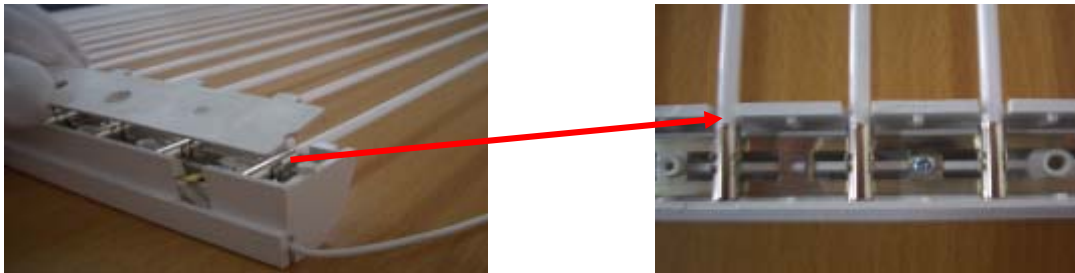
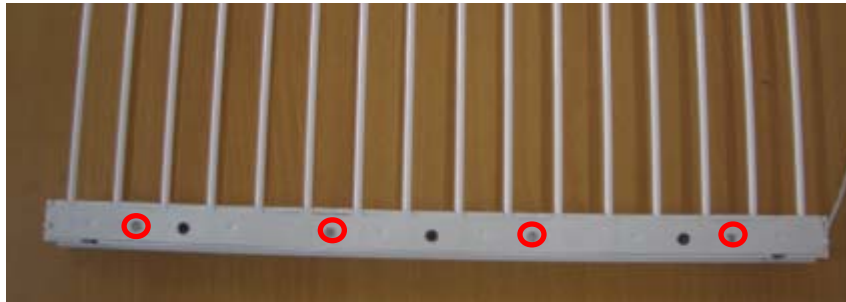
Side wall

1-2-5. Dismantle the <Module> as below pictures



<Module>

1-2-6. Overturn the <Module>, and open the frame which fixed with screw.



1-2-7. Replace the lamp and assemble in reverse order.

